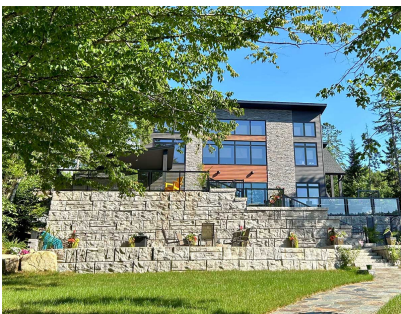


## K-Block Wall + Steps





20 Clay Brick Way  
Lantz, NS B2S 3G4  
(902) 883-2201  
[salesinfo@shawbrick.ca](mailto:salesinfo@shawbrick.ca)  
[shawbrick.ca](http://shawbrick.ca)

### **A larger retaining wall block that's big on value.**

The larger, six-square-foot K-Block has benefits staked in your favour for retaining wall projects on a grander scale. It is the best and most-innovative retaining wall block available in precast concrete. K-Block delivers fully-engineered landscape block technology that greatly reduces installation time and labour costs. And it does this with unmatched safety, durability and aesthetics.

Landscape block state-of-the-art? We go one better, this is landscape block state-of-the-block!

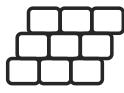
### RECOMMENDED USE



Driveways



Pool Decks



Steps &  
Walls

### COLOUR



Granite

### TEXTURE



Tumbled

### INSTRUCTIONS/SUPPORT

[K-Block Brochure](#)

### **SPECIFICATIONS**

**6SF K-Block:** 48-L X 28-W X18-in 965lbs (438kg)





20 Clay Brick Way  
Lantz, NS B2S 3G4  
(902) 883-2201  
salesinfo@shawbrick.ca  
shawbrick.ca

**6SF Extension K-Block:** 48-L X 44-W X 18-H in, 1530lbs (695kg)

**6SF Top K-Block:** 48-L X 28-W X 18-H in 811lbs (368kg)

**3SF K-Block:** 24-L X 28-W X 18-H in 471lbs (214kg)

**3SF Extension K-block:** 24-L X 44-W X 18-H in 727lbs (330kg)

**3SF Top K-Block:** 24-L X 28-W X 18-H in 393lbs (179kg)

**6SF Corner Standard:** 50-L X 26-W X 18-H in 1510lbs (685kg)

**3SF Half Block Free Standing, Dual Face:** 24-L X 28-W X 18-H in 1030lbs (470kg)

**6SF Free Standing, Finished End, Dual Face:** 48-L X 28-W X 18-H in 1874lbs (850kg)

**3SF Half Block Free Standing, Dual Face, Finished End Cap:** 48-L X 28-W X 18-H in 1124lbs (510kg)

**6SF Free Standing, Dual Face:** 48-L X 28-W X 18-H in 1543lbs (700kg)

**k-Block Cap/Corner Cap:** 48-L X 32-W X 6-H in 825lbs (375kg)

**K-Block End/Corner:** 50-L X 26-W X 18-H in 1467lbs (666kg)

**K-Block 6ft Step:** 72-L X 28-W X 6-H in, 942lbs (428kg)

**K-Block 5ft Step:** 60-L X 16-W X 6-H in, 441lbs (200kg)

**K-Block 4ft Step:** 48-L X 16-W X 6-H in, 371lbs (169kg)

**K-Block 4ft Step Hollow:** 48-L X 20-W X 7-H in 286lbs (130kg)